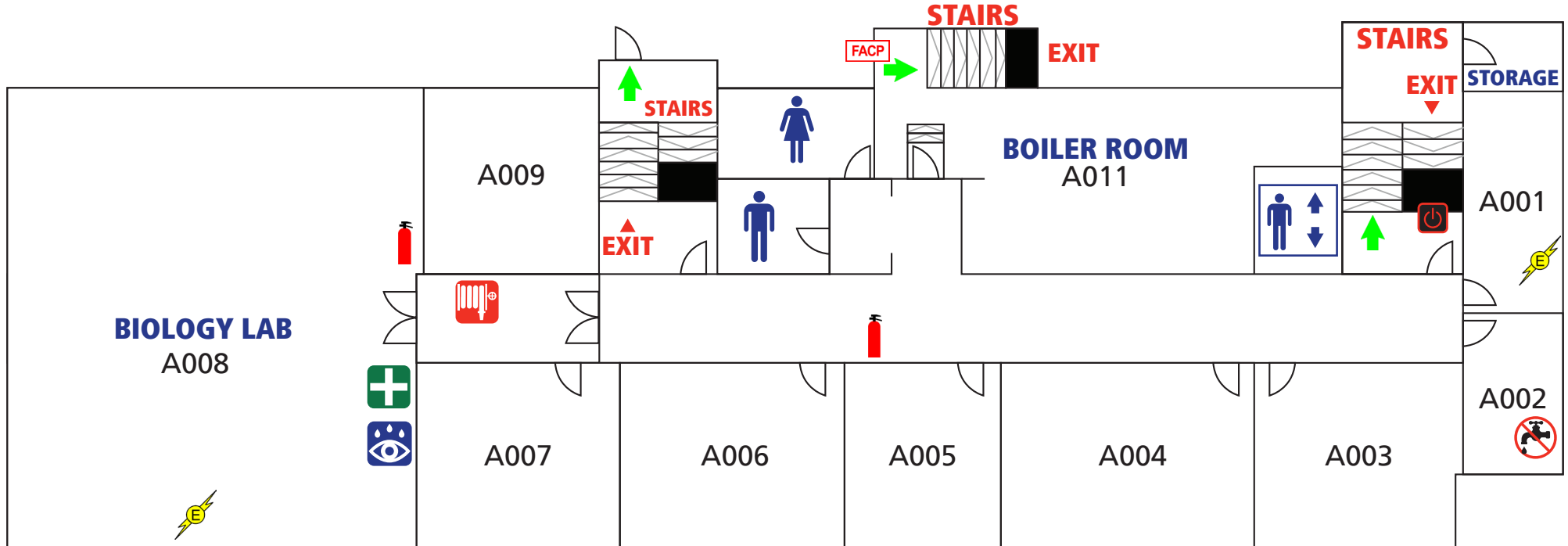




Administration Building Basement

EMERGENCY TELEPHONE NUMBERS:
Emergency: 9-1-1
Main Office: 403-531-9130
Campus Security: 403-671-4357 (HELP)



- Bathrooms
- First Aid Kit
- Fire Extinguisher
- Elevator
- Eye Wash Station

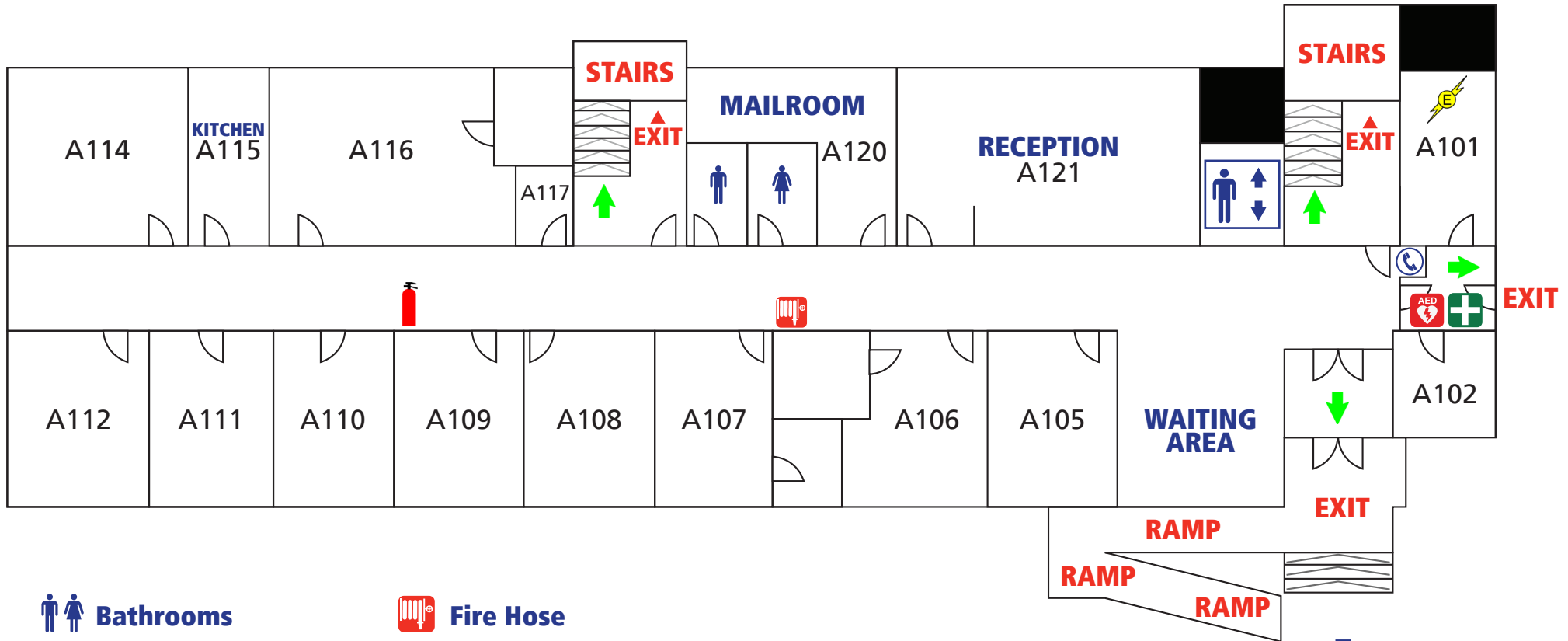
- Fire Hose
- Main Power Shut off
- Fire Exit
- Electrical Hazard
- Fire Alarm Control Panel
- Domestic Water Shut off

**In case of fire, use stairway for exit.
DO NOT USE ELEVATOR**



Administration Building Main Floor

EMERGENCY TELEPHONE NUMBERS:
Emergency: 9-1-1
Main Office: 403-531-9130
Campus Security: 403-671-4357 (HELP)



Bathrooms

AED

First Aid Kit

Fire Extinguisher

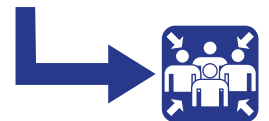
Elevator

Fire Hose

Fire Exit

Electrical Hazard

Eye Wash Station in Biology Lab,
Room A008, Basement



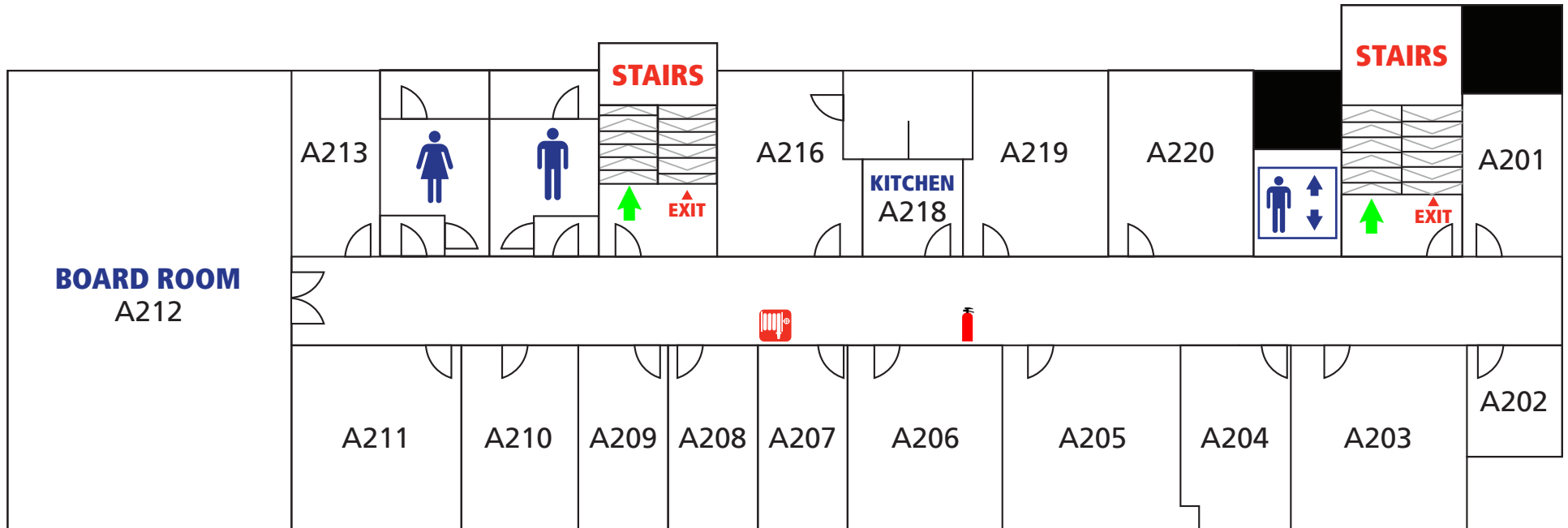
**EVACUATION
MUSTER POINT**

**In case of fire, use stairway for exit.
DO NOT USE ELEVATOR**



Administration Building 2nd Floor

EMERGENCY TELEPHONE NUMBERS:
Emergency: 9-1-1
Main Office: 403-531-9130
Campus Security: 403-671-4357 (HELP)



-  Bathrooms
-  Fire Hose
-  Fire Extinguisher
-  Elevator
-  Fire Exit

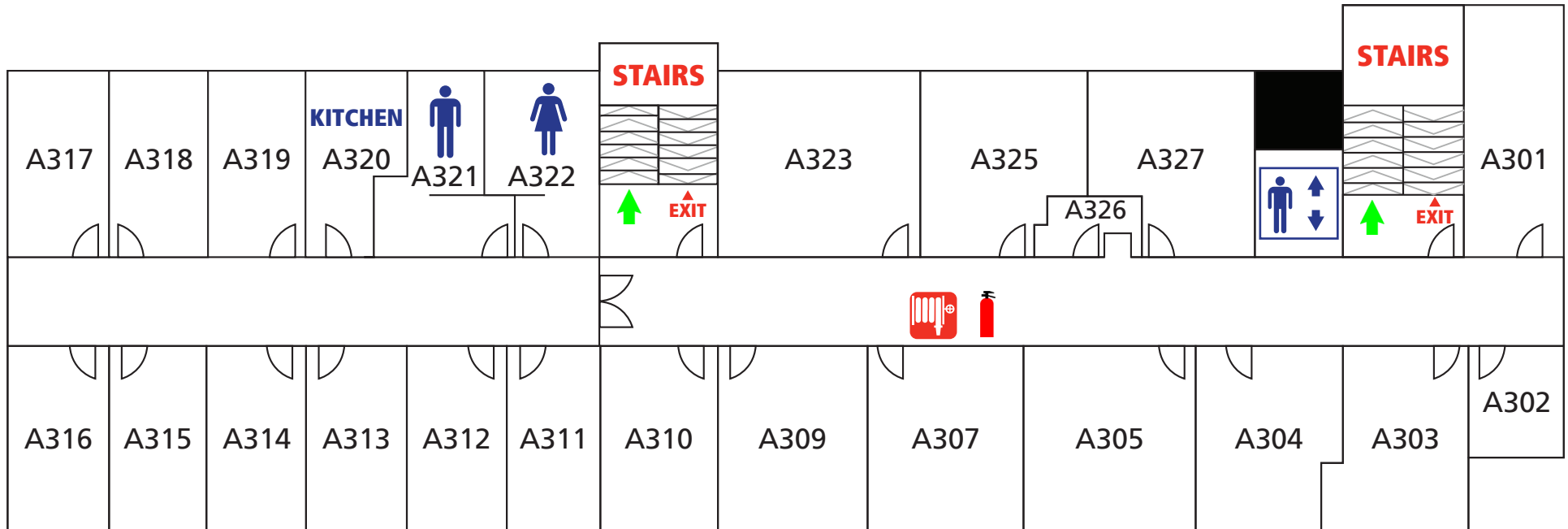
**In case of fire, use stairway for exit.
DO NOT USE ELEVATOR**

EMERGENCY TELEPHONE NUMBERS:
Emergency: 9-1-1
Main Office: 403-531-9130
Campus Security: 403-671-4357 (HELP)



EMERGENCY TELEPHONE NUMBERS:
Emergency: 9-1-1
Main Office: 403-531-9130
Campus Security: 403-671-4357 (HELP)

Administration Building 3rd Floor



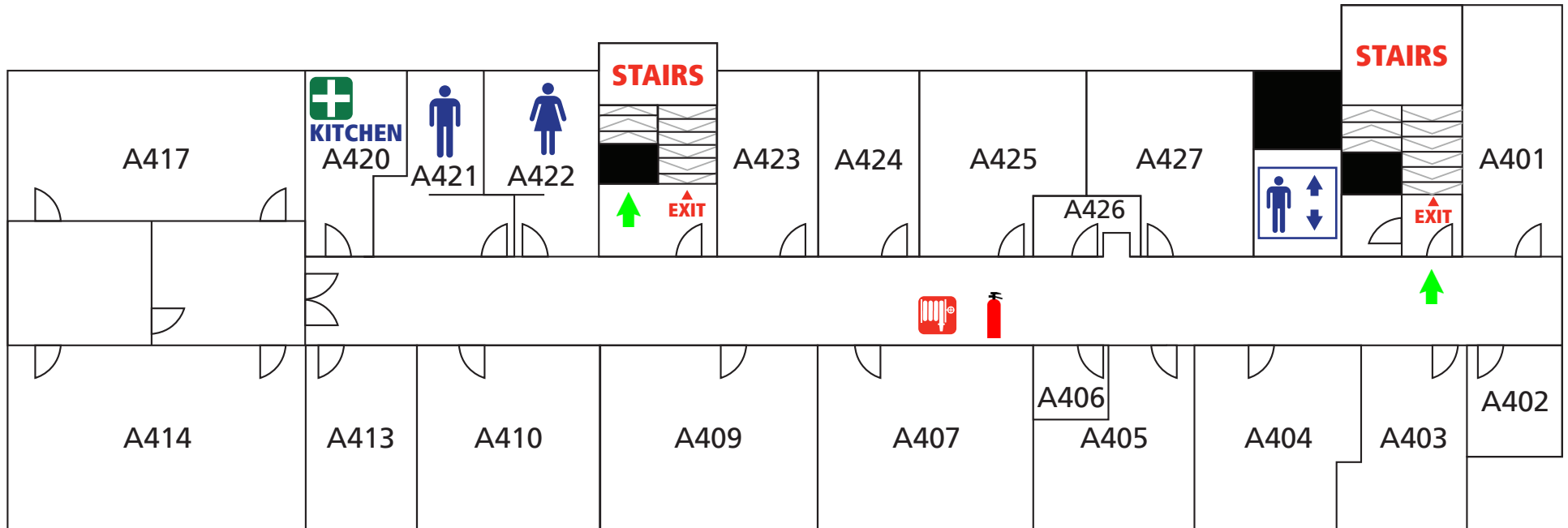
- Bathrooms
- Fire Extinguisher
- Elevator
- Fire Hose
- Fire Exit

**In case of fire, use stairway for exit.
DO NOT USE ELEVATOR**



Administration Building 4th Floor

EMERGENCY TELEPHONE NUMBERS:
Emergency: 9-1-1
Main Office: 403-531-9130
Campus Security: 403-671-4357 (HELP)



-  Bathrooms
-  First Aid Kit
-  Fire Extinguisher
-  Elevator

-  Fire Hose
-  Fire Exit
-  Eye Wash Station in Biology Lab,
Room A008, Basement

**In case of fire, use stairway for exit.
DO NOT USE ELEVATOR**